

**LAND CERTIFICATE NO. 38495 COPY**

Land Certificate No. 38495 Tulcea

**A. Part I. Property description LAND**

within the built-up area

Address: Loc. Tulcea, Str ISACCEI, Nr. FN, Jud. Tulcea, Trei Fantani Park

Item no.	Cadastral number Topographic number	Surface* (sqm)	Observations / References
A1	38495	1,765	

**B. Part II. Owners and documents**

Entries regarding property rights and other real rights		References
14255 / 10/03/2014		
Administrative Act no. 99, dated 31/05/2012 issued by the Local Council of the municipality of Tulcea;		
B1	Tabulation, PROPERTY right, acquired by law, current share 1/1, initial share 1/1	A1
	1) TULCEA MUNICIPALITY, CIF (Fiscal Identification Code): 4321429, public domain	

**C. Part III. ENCUMBRANCES.**

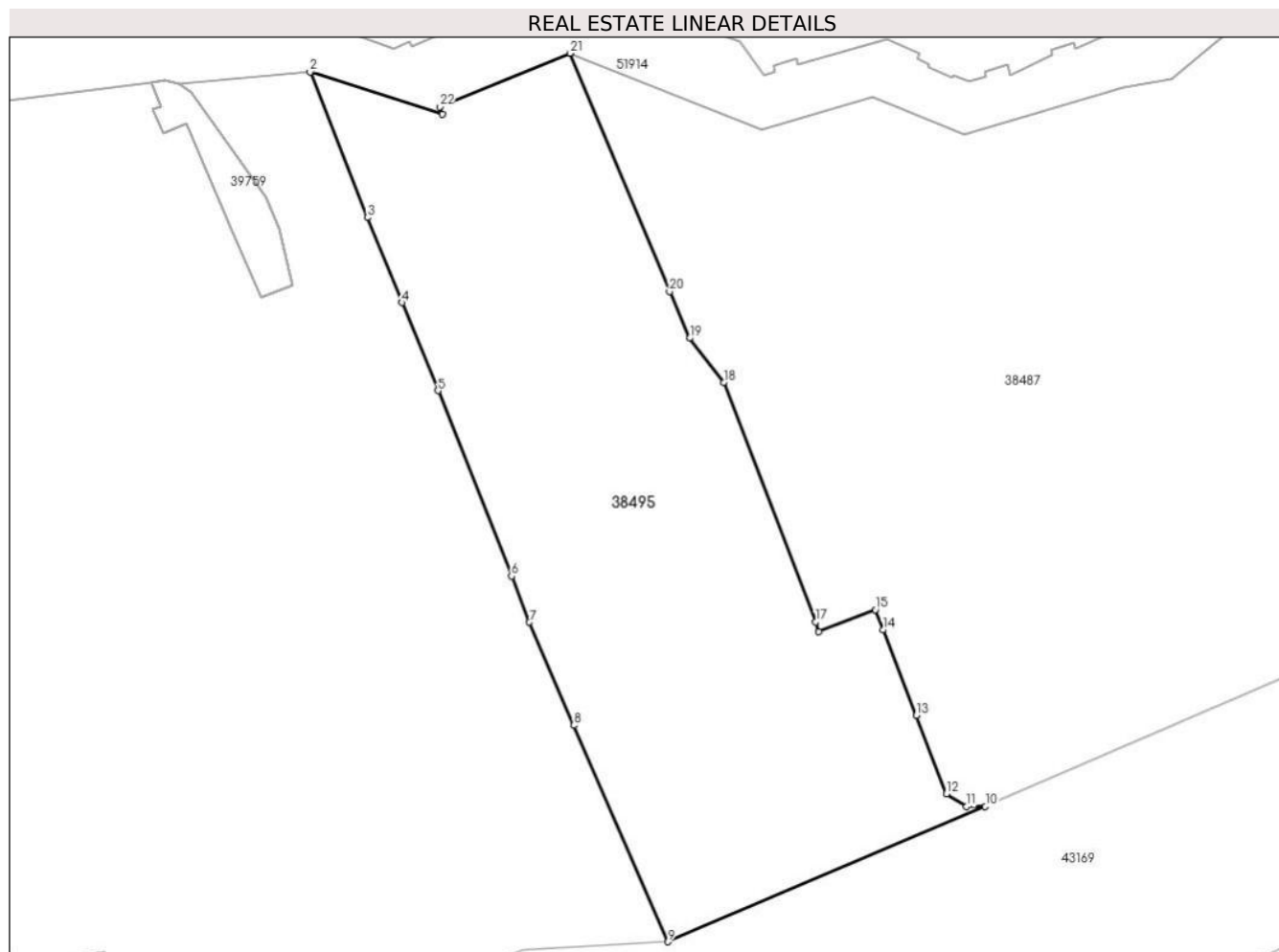
Entries regarding dismemberment of property rights, real rights of guarantee and encumbrances	References
NOT EXISTING	

## Annex No. 1 To Part I

## Land

Cadastral no.	Surface (sqm)*	Observations / References
38495	1,765	

\* The surface is determined in the Stereo 70 projection plane.



## Land related data

Item no.	Usage category	Land within the built-up area	Surface (sqm)	Strip land	Lot	Topographical no.	Observations / References
1	construction yards	YES	1,765	-	-	-	

## Segments length

1) The segment length values are obtained from the plan projection.

Start point	End point	Segment length (** (m))
1	2	11,902
3	4	7,888
5	6	17,143
7	8	9.65
9	10	29,611
11	12	2,015

Start point	End point	Segment length (** (m))
2	3	13,425
4	5	8,166
6	7	4,253
8	9	20.27
10	11	1,634
12	13	7,214

Start point	End point	Segment length (** (m)
13	14	7,891
15	16	5,214
17	18	22,052
19	20	4,376
21	22	12,094

Start point	End point	Segment length (** (m)
14	15	1,844
16	17	0,898
18	19	4,783
20	21	22,179
22	1	0,678

\*\* Segment lengths are determined in the Stereo 70 projection plane and are rounded to 1 millimeter.

\*\*\* The distance between the points is made up of cumulative segments that are smaller than the value of 1 millimeter.